

Sidwell’s Software License Authorization Guide

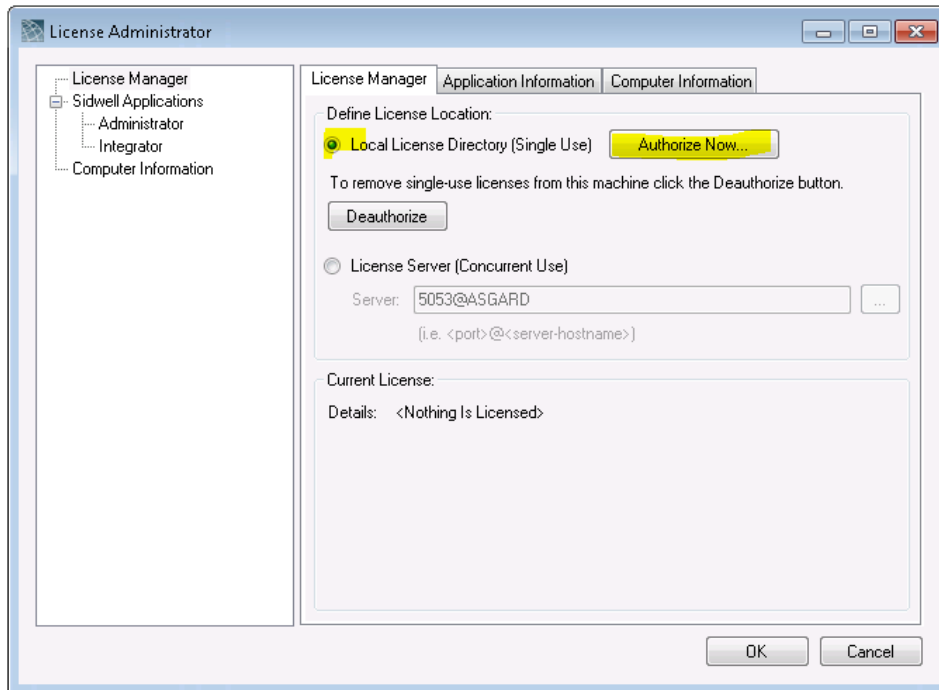
Contents

Single-Use License Authorization.....	2
Concurrent License Authorization	4

Single-Use License Authorize

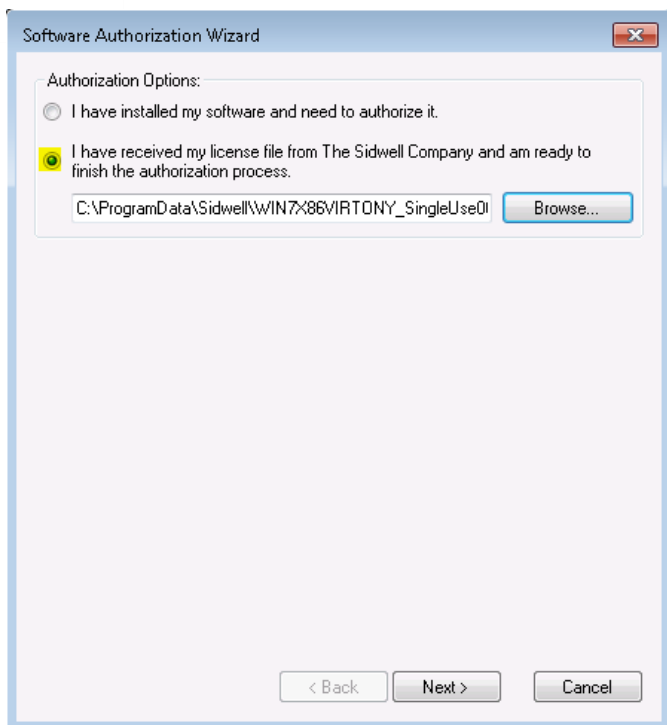
This section will outline the authorization of a single-use license or licenses for Sidwell's desktop products.

1. Open the Desktop License Administrator (Start Menu > All App > SidwellGIS).
2. Select the "Local License Directory (Single Use)" option, and click the Authorize Now... button.

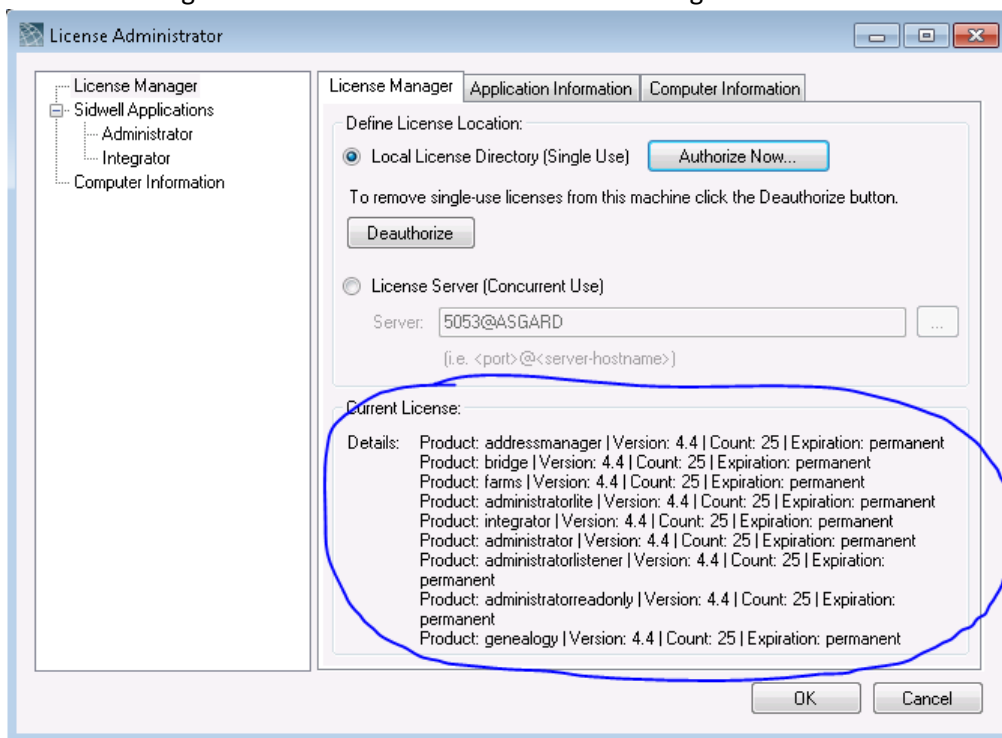


3. The Software Authorization Wizard dialog should appear.
4. Select the "I have received my license file from The Sidwell Company and am ready to finish the authorization process" option.

- Click the “Browse...” button to browse to where the license file is stored.



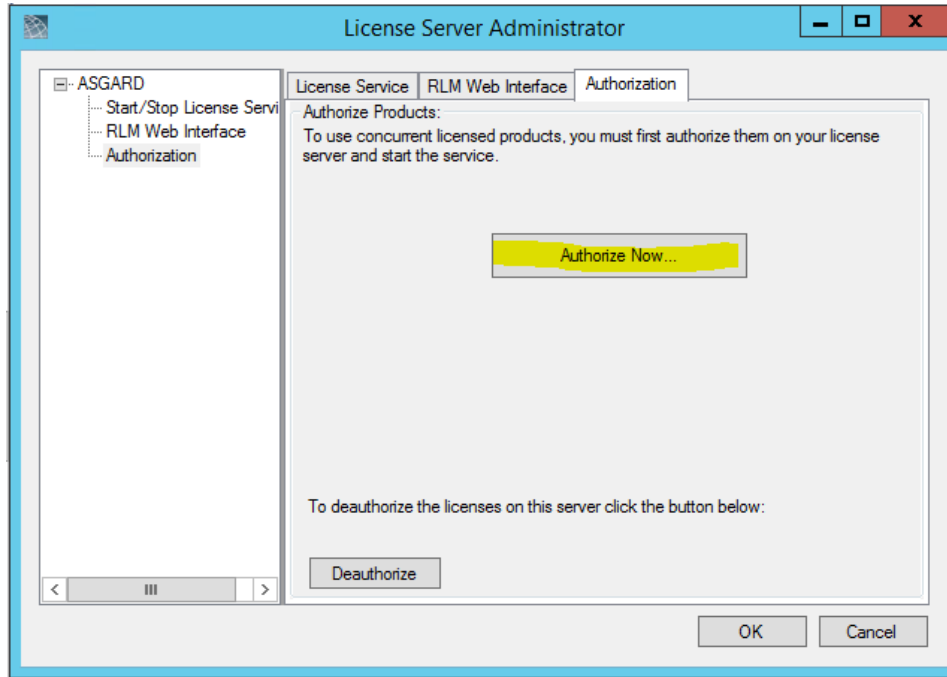
- Click the “Next >” button.
- If the Single Use license file is valid the dialog will close and your Desktop License Administrator’s “License Manager” tab should look similar to the following:



Concurrent License Authorization

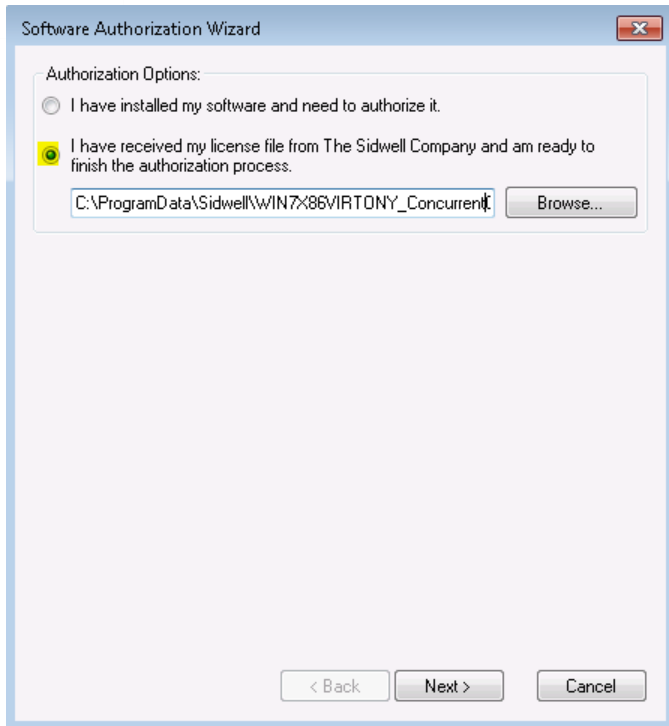
This section will outline the authorization of a concurrent license for Sidwell's desktop products.

1. Open the Server License Administrator (Start Menu > All Apps > SidwellIGIS).
2. Select "Authorization" tab and then Click the "Authorize Now..." button.

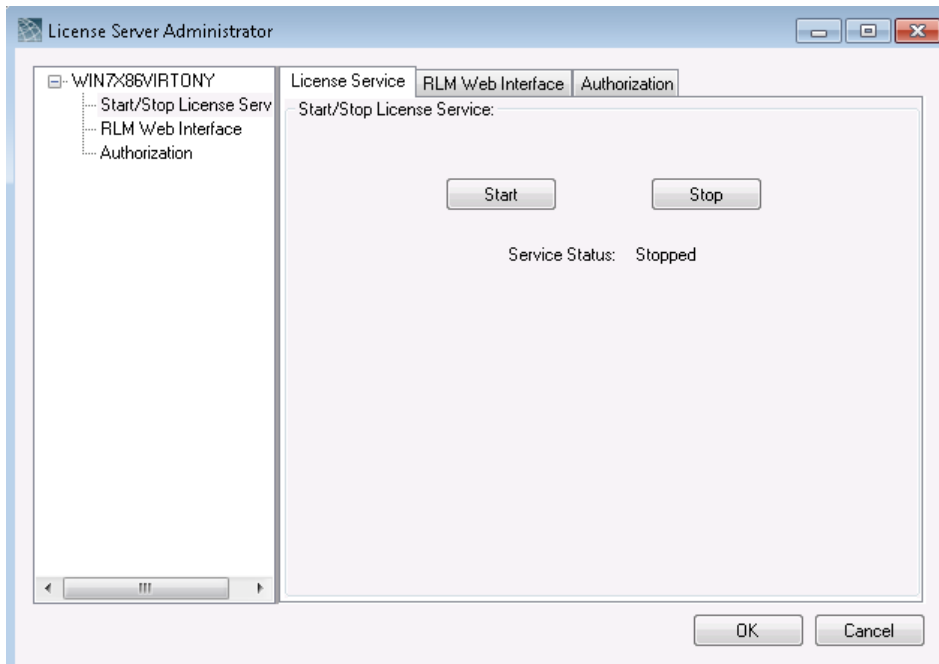


3. The Software Authorization Wizard dialog should appear.
4. Select the "I have received my license file from The Sidwell Company and am ready to finish the authorization process" option.

5. Click the “Browse...” button to browse to where the license file is stored.

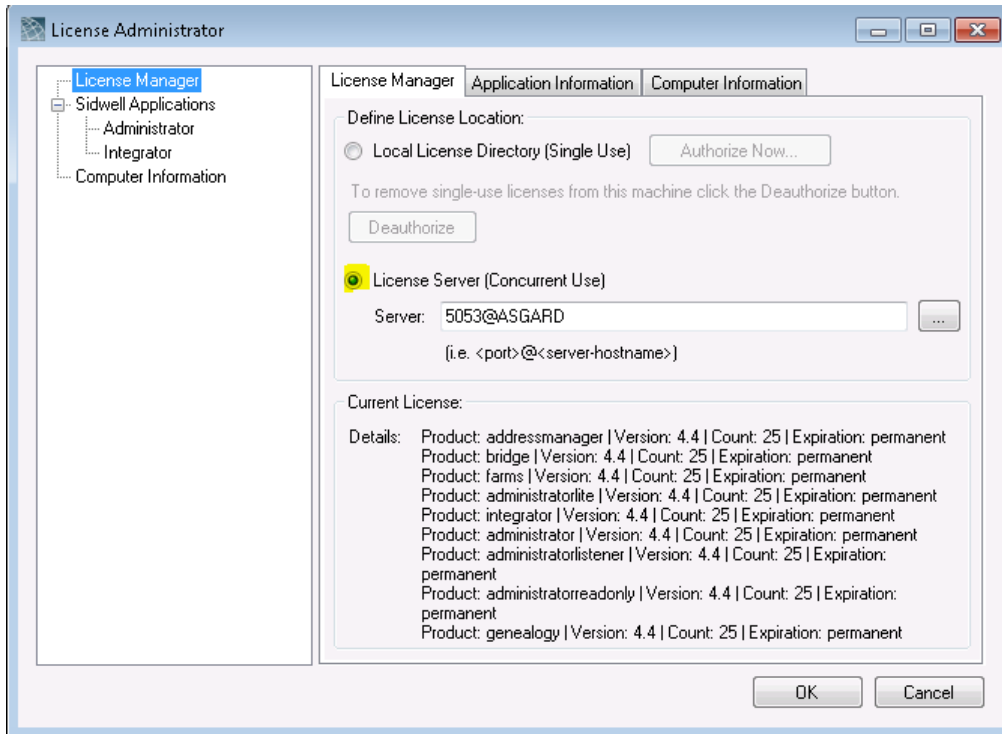


6. Click the “Next >” button.
7. If the Concurrent license file is valid the “Software Authorization Wizard” dialog will close.
8. On the “License Server Administrator” dialog, click the License Service tab, and click the “Start” button.



9. Click the “OK” button to close the “License Server Administrator” dialog.

10. Go to each workstation that contains Sidwell's software and open the Desktop License Administrator (Start Menu > All Apps > SidwellGIS).
11. Click the "License Server (Concurrent Use)" option.



12. Type the following into the Server textbox: 5053@<ServerName>, where <ServerName> represents the server that the Server License Administrator is installed. In the example above, the server name is ASGARD. After typing click the "Enter" key on your keyboard. You can also click the "..." button to enter the port and server name.

13. If everything is valid, your Desktop License Administrator's "License Manager" tab should look similar to the following:

